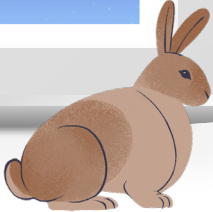


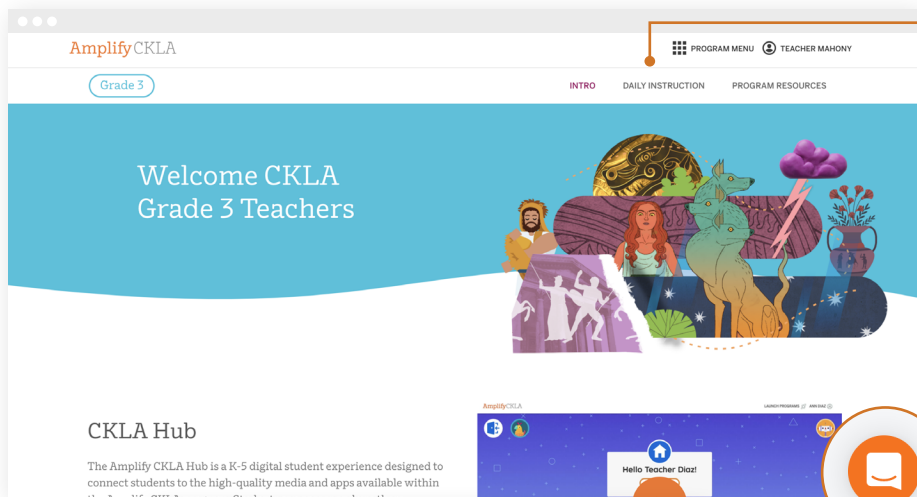
IMPLEMENTATION CHECKLIST

Back to Basics



Amplify CKLA 101

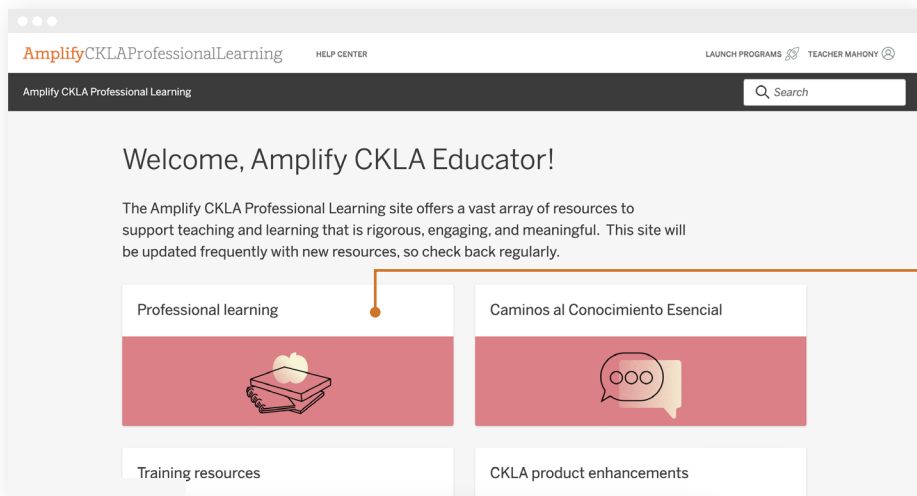
Use this checklist as a refresher for what we covered in the session to help you implement Amplify CKLA in your classroom.



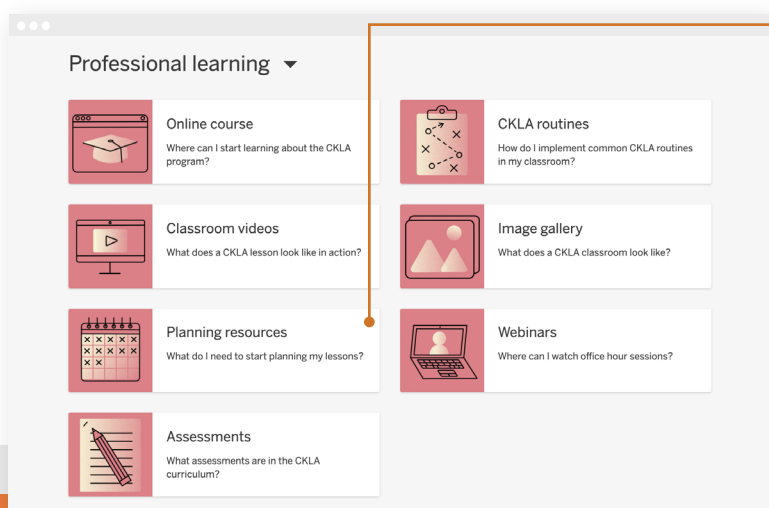
1. Navigate to the **Teacher Resource site**, and select **Daily Instruction**. Scroll down or click **Planning Documents** to familiarize yourself with the available downloads.



If you need help, just click on the **Amplify Chat icon** in the bottom right-hand corner of your screen.



2. Visit the **CKLA Professional Learning site**, and navigate to the **Professional learning** tab. Check out the **Classroom videos** section to see lessons in action or the **Image gallery** section for pictures from CKLA classrooms.



3. Navigate to the **Planning resources** to prepare for your CKLA lessons. On the **Professional Learning site**, select **Professional learning**, then **Planning resources**.

- Download the **Unit Planning Templates** and review the questions
- Download the **Lesson Internalization** and identify the *Primary Focus Objective(s)*.

Amplify.

Advice and answers from the Amplify Team

Search for articles...



Contact our Customer Care and Support team

Our Customer Care and Support team is here to provide technical and instructional support by phone, live chat, or email.

2 articles in this collection
Written by Amplify



Getting Started

How to log in, district enrollment, troubleshooting, technical requirements, and more.

29 articles in this collection
Written by Amplify, Phaela Peck, Nancy Tsai and 2 others

My Account Management

4. Use the search tool at the top of **our help library**, and type in keywords such as *QR code* or *resource site* to find help articles related to those topics. Use this search tool anytime you're looking in our robust help library for details you need on Amplify resources.

Need another refresher? Visit
start.amplify.com/bonus
to find helpful resources on the
start.amplify CKLA page.

Amplify.