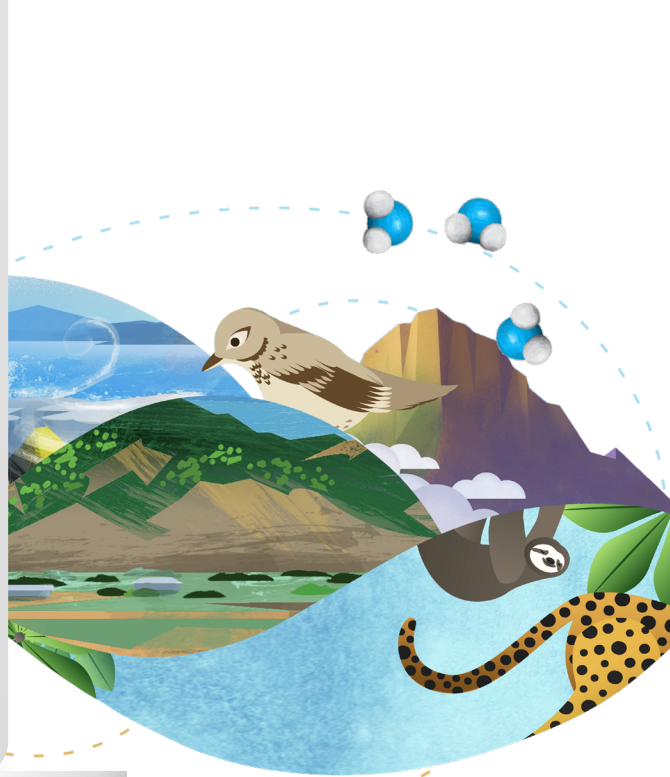
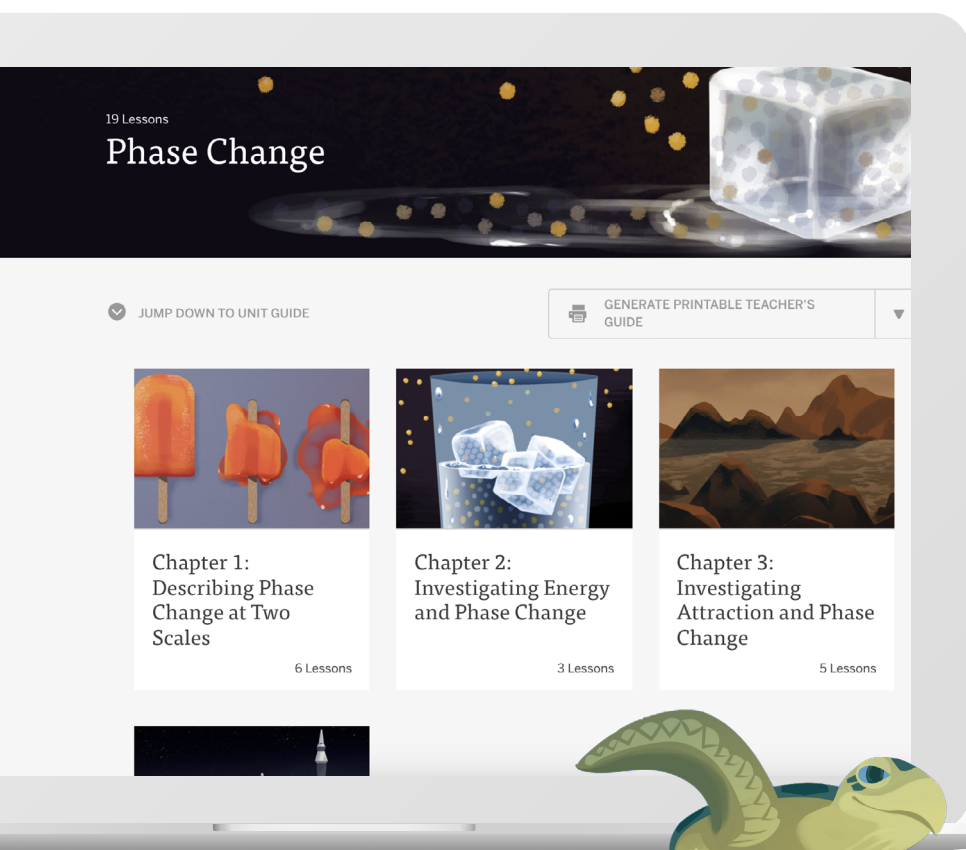


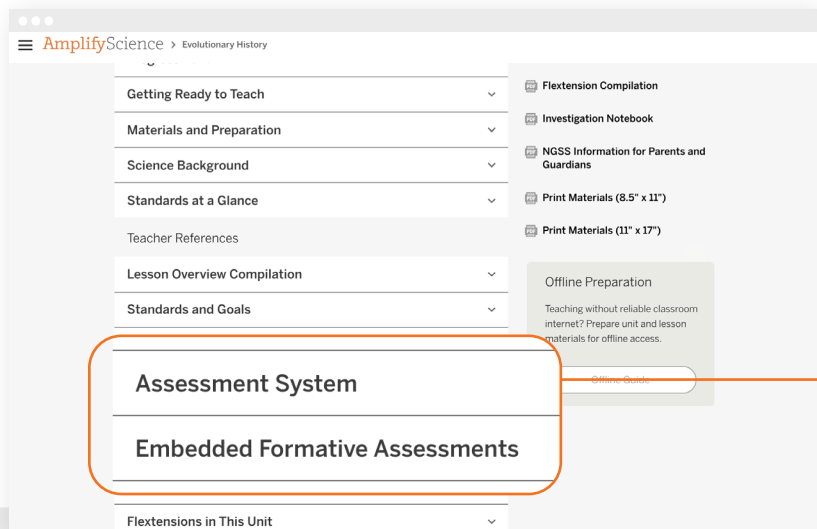
IMPLEMENTATION CHECKLIST

# Back to Basics 301



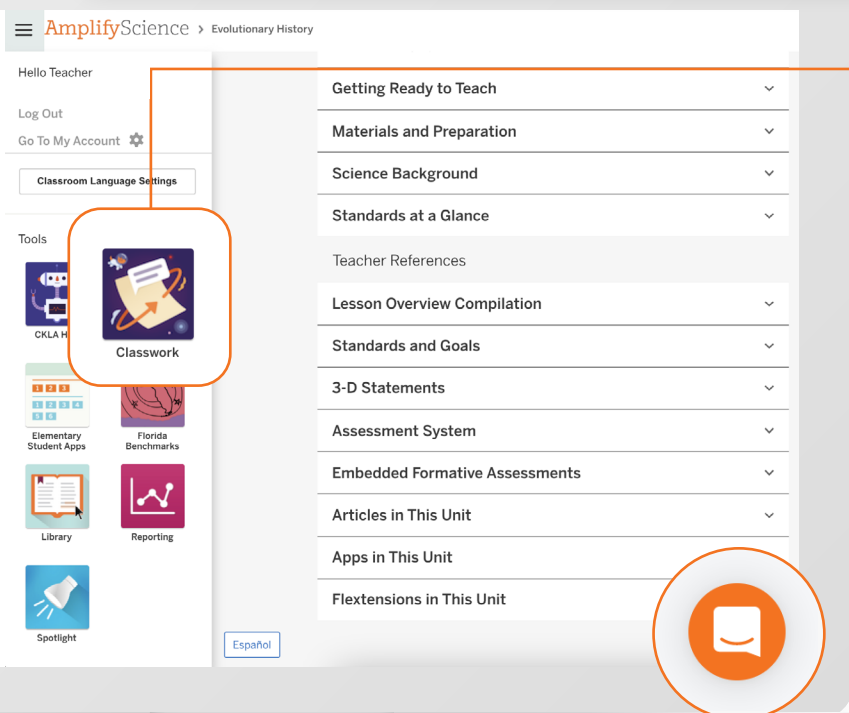
# Amplify Science 6–8

Use this checklist as a refresher for what we covered in the session to help you implement Amplify Science in your classroom.



1. From the unit landing page, review the information available under the **Teacher References** section.

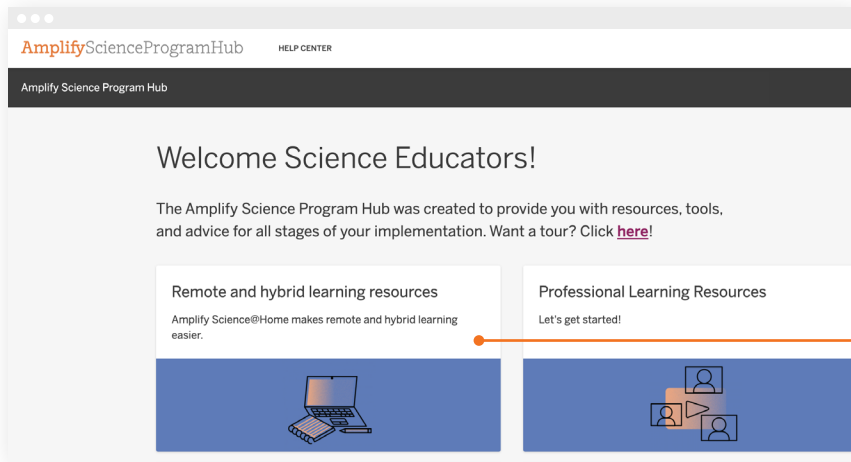
- Open the **Assessment System** tab, and explore the different options available to you for monitoring student understanding. Read this [Unit Assessments help article](#) for additional information about 6–8 assessments.
- Expand the **Embedded Formative Assessments** tab, and review two *On-the-Fly* assessment activity suggestions.



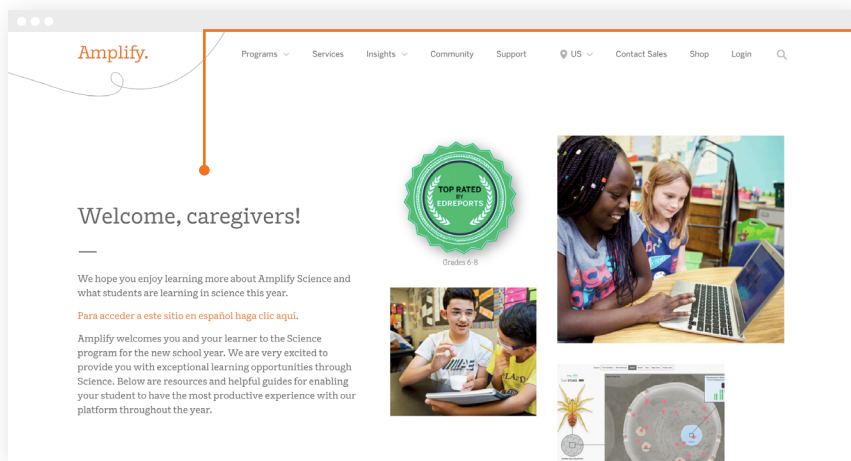
2. Open the Global Navigation Menu, and locate the apps available in the **Tools** section.

- Open the **Classwork** app, and examine your current class content and submissions embedded within the three tabs: Activities, Portfolios, and Levels. Read this [Classwork help article](#) for more information on functionality.
- Open the **Reporting** app, and select one unit to review and use to examine class data. Do you see trends/changes between the Pre-Unit Assessment to Critical Juncture and End-of-Unit Assessment? Read this [Reporting help article](#) to learn more about this feature.

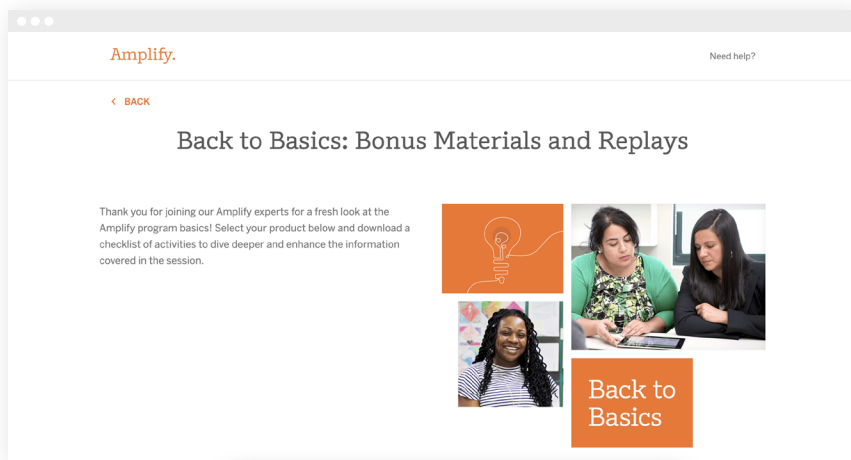
If you need help, just click on the **Amplify Chat icon** in the bottom right-hand corner of your screen.



3. Visit the **Amplify Science Program Hub** embedded at the bottom of the Global Navigation Menu, then select **Remote and hybrid learning resources**.
- Select a unit, and explore the options available to support you.
  - Consider: *How will you use the @Home Videos? How will you use the Read-Aloud Videos?*



4. Visit the **Caregiver Resources website** to familiarize yourself with content available to support parents' and caregivers' understanding of Amplify Science.



5. To download your **certificate of completion** for participating in the Amplify Science Back to Basics webinar series, go to **start.amplify.com/bonus**.

Need another refresher? Visit  
**[start.amplify.com/bonus](https://start.amplify.com/bonus)**  
to find helpful resources on the  
**start.amplify** Science page.

Amplify.